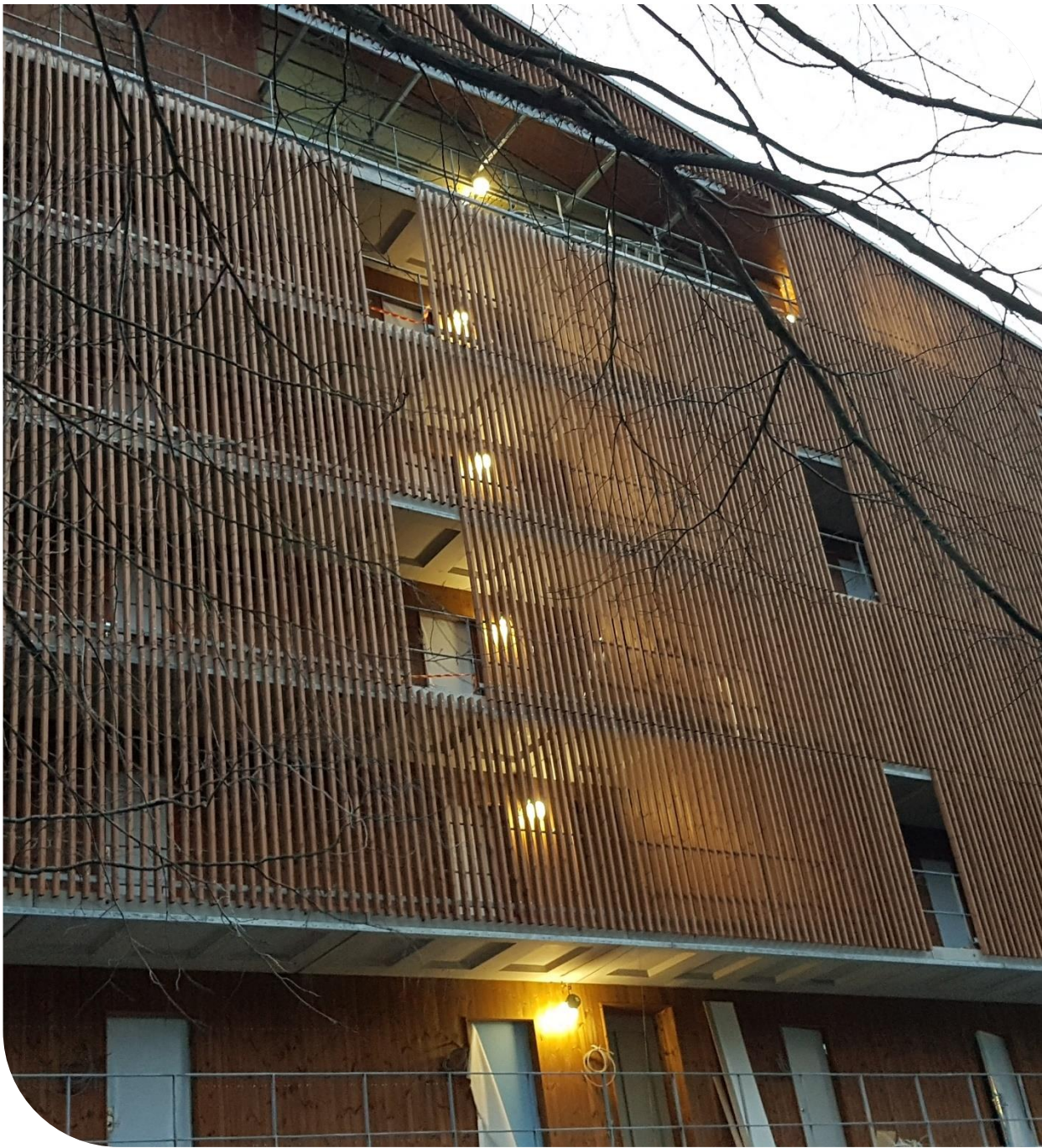


Reuse and recycling of timber in the criteria of The Nordic Swan Ecolabel for new buildings

Konstantinos Litsios

2020-10-20



How The Nordic Swan Ecolabel certification can facilitate the reuse and recycle of timber products in certified buildings

The Nordic Swan Ecolabel certification system for new buildings can promote the reuse and recycling of timber with its requirements in two ways:

Enabling the timber products and construction parts that are built in today to be reused or recycled later on.

Promoting the use of recycled timber in the construction of a new building today.

Enabling the reuse and recycling of timber:

1) Requirements O16-O20 on chemical products and O22 on building products

An essential aspect in reusing any product is to be certain that it can be reused, that means not to contain any harmful substances. Timber products treated with hazardous substances cannot be reused in future projects so it is important that it is verified that the timber products of a project do not contain those substances. The Nordic Ecolabel does not allow (among others) the use of:

- A substance on the EU's Candidate List
- Substances evaluated by the EU to be PBT substances or vPvB substances in accordance with the criteria in Appendix XII in REACH including substances those have not been evaluated but are considered to meet the requirements.
- Substances classified as carcinogenic, mutagenic or toxic for reproduction (CMR) Category 1A and 1B.
- Substances considered to be potential endocrine disruptors in category 1 or 2 on the EU's priority list of substances that are to be investigated further for endocrine disruptive effects
- The heavy metals lead, cadmium, arsenic, chromium (VI), mercury and their compounds.

Enabling the reuse and recycling of timber:

Requirement O29 also does not allow the use of impregnated timber with heavy metals and/or biocides.

The certification of a project with Nordic Ecolabel ensures that timber built in the construction today can be reused later without having to spend significant resources in securing that it does not contain hazardous chemical substances.

2) Requirement O15 – Logbook of the project

The Nordic Ecolabelled buildings are required to have a logbook of all the products that are built in. The logbook has information about the product id (Name, producers, supplier), the main constituent materials and the place in the building. That means that today's Nordic Ecolabelled buildings come with an inventory of all the products that are made of timber, their name and place in building.

This is another essential step in reusing any timber construction product, to know exactly which product is used in the building and where in order to retrieve it and reuse it according to its properties.

Enabling the reuse and recycling of timber:

3) Requirement P13 Recycling of building waste

This point requirement is facilitating the sorting of construction waste at the construction waste in different fractions. Those fractions can then be send to recycling or be reused after treatment. In that way timber fraction can be sorted separately enabling the recycling/reuse of the material. The requirement is focusing in the efficiency of sorting, from 50% up to 70% of the total amount of waste.

In practice, any construction site that is sorting over 50% of the construction waste has to sort timber products in a separate fraction to achieve this.

The above requirements secure that timber products used today in the construction of a nordic ecolabelled building are safe to be reused or recycled, can be identified and located to be recaptured under a renovation or when demolising the building and the timber in the construction waste will be sorted as a "clean" fraction to be ready to be recycled.

Promoting the use of recycled or reused timber:

1) Requirement P12 Recycled or reused materials in construction products

This requirement gives points for using reused raw materials or construction products (outside the vapour barrier) in the project, including timber and timber products.

2) Requirement O28 on wood raw materials

This obligatory requirement demands that 70% of the most important timber construction elements come from forestry certified under the FSC or PEFC schemes or be recycled material.

These requirements clearly promote the use of reused or recycled timber in the construction of nordic ecolabelled buildings today



Next generation

In the next generation of our criteria those requirements will be present with even broader scope along with new ones, showing our focus in circular economy and helping our partners in working with circular material flows.

Generation 4 of our criteria for new houses and schools will come out in spring 2021

An aerial photograph of a coastal landscape featuring a large body of water, several small islands, and a densely forested shoreline with some buildings. A large, semi-transparent white circle is positioned on the left side of the image, containing text.

For more
information:

<http://www.nordic-ecolabel.org/>

Thank you for your
time!